



# 1588 AIM Platform ENT & Neuro Surgery

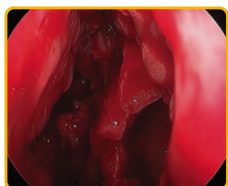
Providing visualization solutions common to ENT and Neuro surgical Environments.

**Without even lighting** across the entire scene, the scope must be moved closer to the anatomy. The scope close to anatomy creates triangulation with neurosurgeon's instruments.

Overly red surgical images cause darkening and red tinting to non-bloody tissue. Removing the intense reds of a surgical image helps surgeons to **clearly delineate between inflamed and non-inflamed tissue.**

## See and do more in Ears Nose Throat & Skull

The 1588 AIM Platform allows you to see more in ENT Surgery. The 1588 AIM camera system is designed to improve visualization by creating a brighter image deep in the nasal cavity. The AIM platform also includes a "desaturation" mode, which allows for better color control by decreasing saturation in an image.



### 1588 AIM Platform:

**DRE.**

- Designed to improve visualization in the surgical field by creating a brighter image in dark and posterior compartments by up to 150%<sup>1</sup>
- Activation of DRE is done with a touch of a button on the 1588 AIM camera head

**Desaturation.**

- Reduces intense reds up to 66% in bloody surgical environments<sup>2</sup>

**Clarity.**

- Real-time video enhancement device designed to improve visualization by increasing clarity, contrast and detail
- Military grade technology helps surgeons see through sub optimal conditions by improving image quality up to 48%<sup>3</sup>

Together with our customers, we are driven to make healthcare better.



# Complete control of your operating room with SDC3

## Customized OR experience

Surgical devices connected to the SDC3 are configured to your preferred settings with the touch of a button.

## Seamless surgical workflow

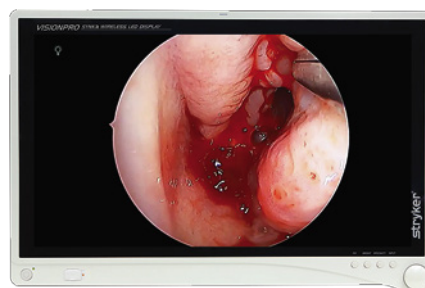
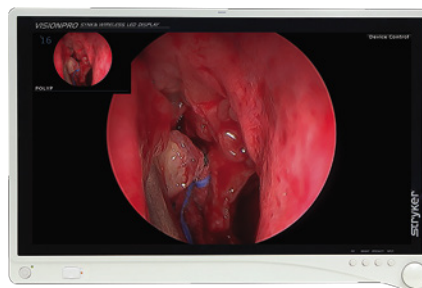
With device and voice control, connected surgical devices respond to your immediate needs from the sterile field, giving you complete control.

- **Customized annotations for anatomical labeling**
  - Customized annotations are pre-configured to your image capture workflow, and automatically applied with the touch of one button or voice command
- **Customized device monitoring overlays**

## Elevated surgical content

Enhance the patient experience with HD digital content labeled for better patient understanding through the MySDC3 iPad app. Insert surgical images into a customized template containing your post operative instructions with your facility logos.

- **Streamline post-op media management by storing images directly to the patient's chart**
- **Share surgical images and post operative instructions through cloud integration**



### Footnotes:

1. Data on File: ECO21929, 158% average luminance increase in test samples. Statistical difference detected between DRE on and off using a 1-sided paired t-test (p=0.049).
2. Data on File: TR16427
3. Data on File: ECO21631

The information presented in this brochure is intended to demonstrate a Stryker product. Always refer to the package insert, product label and/or user instructions before using any Stryker product. Products may not be available in all markets. Product availability is subject to the regulatory or medical practices that govern individual markets. Please contact your Stryker representative if you have questions about the availability of Stryker products in your area.

Products referenced with <sup>TM</sup> designation are trademarks of Stryker.  
 Products referenced with ® designation are registered trademarks of Stryker.

Literature Number: 1000901941 Rev. A  
 VID/FWG 0.0K 03/16

Copyright © 2016 Stryker  
 Printed in USA



Stryker Endoscopy  
 5900 Optical Court  
 San Jose, CA 95138  
 t: 1 800 624 4422

[www.stryker.com](http://www.stryker.com)