

IMAGE 1 HUB™ HD

FULL HD Camera Head, FULL HD Camera Control Unit, FULL HD Monitor

IMAGE
HD 1

Ready for the future

Continuous improvement in standardization is a cornerstone of KARL STORZ camera systems. All IMAGE 1 HUB™ HD products are compatible with previous products, ensuring upward and downward compatibility and securing your investment in the future.

Image acquisition with KARL STORZ IMAGE1 HD

- The High Definition three-chip CCD in the IMAGE1 FULL HD camera head captures images in 16:9 format that can be displayed on WIDEVIEW monitors in the same format without being converted.
- Digital input guarantees the best possible image quality. This eliminates the need to convert analog input signals to digital output formats which can result in a loss of image quality.

IMAGE 1 HUB™ HD Camera Control Unit

- The update for the IMAGE1 CCU, combined with a new front panel and an extension of the plug-in slots on the back of the unit, enable all IMAGE1 users to experience the advantages of FULL HD.
- The full range of IMAGE1 functions are also available in the FULL HD system.
- **IMAGE 1 HUB™ HD with backward compatibility**
All existing systems can continue to be used after upgrading the IMAGE1 system to FULL HD. Equipment modules and adaptations to existing infrastructures remain completely compatible.

FULL HD Monitor

Image format and image rendering determine quality

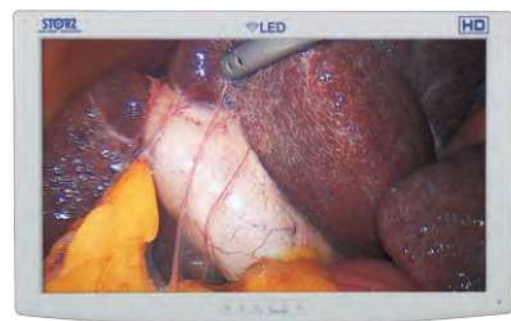
- Using 16:9 aspect ratio in place of the conventional 4:3 format provides a larger display window and demonstrably improves the viewing ergonomics.
- KARL STORZ FULL HD produces the highest possible resolution of 1920 x 1080 pixels, providing medical users with improved depth of focus and color contrast for enhanced surgical performance.



IMAGE1 FULL HD Camera Head H3-Z with 16:9 three-CCD chip



IMAGE 1 HUB™ HD Camera Control Unit – Update of IMAGE1 CCU



KARL STORZ LED Monitor